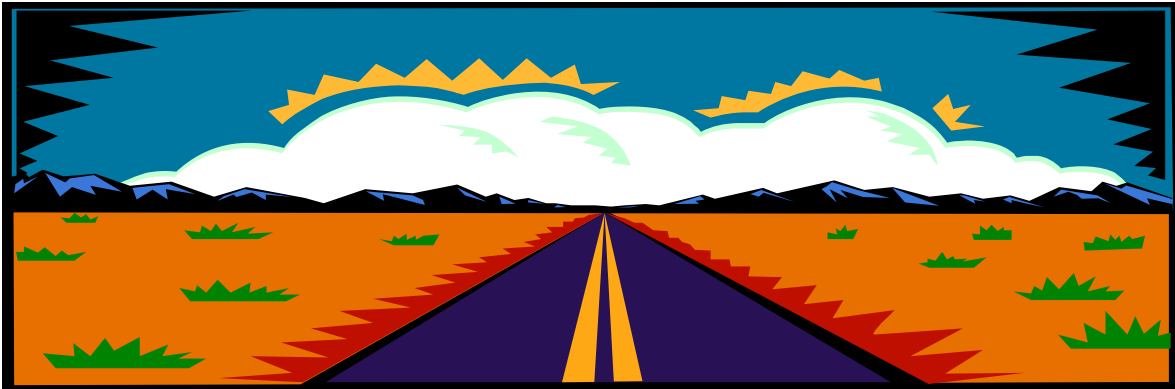


# La Frontera del Llano Scenic Byway



We would like to invite you to attend and participate in the first meeting for the development of the Corridor Management Plan of the La Frontera del Llano Scenic Byway located on NM Highway 39.

The purpose of this meeting is:

- ❖ Explain the key elements and processes of developing a Corridor Management Plan.
- ❖ Discuss the desired outcome of the residents and businesses located along the Scenic Byway.
- ❖ The role the Corridor Management Plan can play in the Economic Development of the area.

Meeting place:       Harding County Community Building  
                              557 Wagon Mound Highway  
                              Roy, New Mexico 87743

Time and Date:        October 7<sup>th</sup>, 2008   6:00 pm  
                              Coffee and refreshments to be served.

Meetings are hosted and facilitated by:  
Harding County, Contact Barbara Shaw, Harding County Manager (575) 673-2927  
Bandera Consulting, Contact Iantha Hicks (575) 769-2659  
Eastern Plains Council of Governments, Contact Steve Henthorn (575) 762-7714